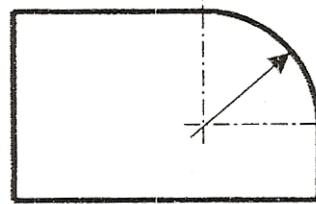
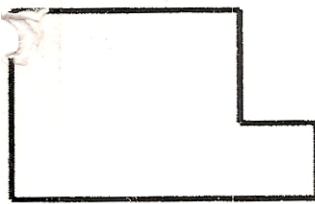


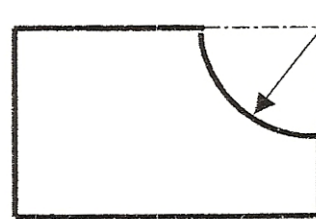
Abschrägung



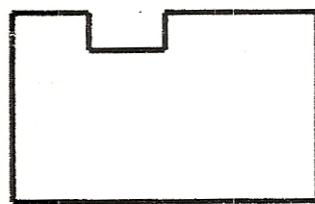
Abrundung
90 Grad



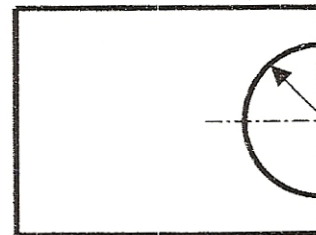
Stufe



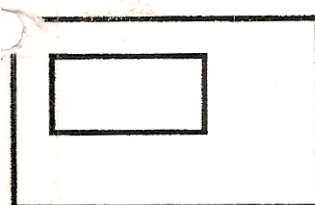
Einrundung
90 Grad



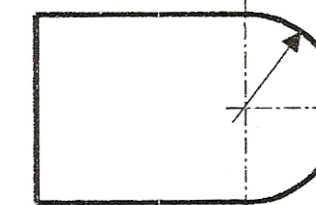
Nut



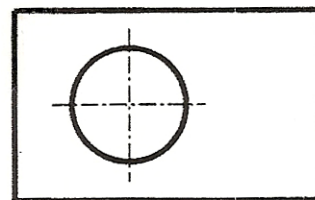
Einrundung
180 Grad



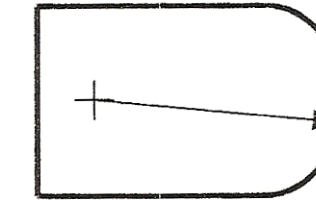
Durchbruch



Abrundung
180 Grad



Bohrung



Teilabrundung

Abschrägung ≙ Durchbruch ≙ Nut ≙ Stufe ≙ Einrundung 90° ≙ Einrundung 180° ≙ Teilab-
rundung ≙ Bohrung ≙ Abrundung 90° ≙ Abrundung 180°

